



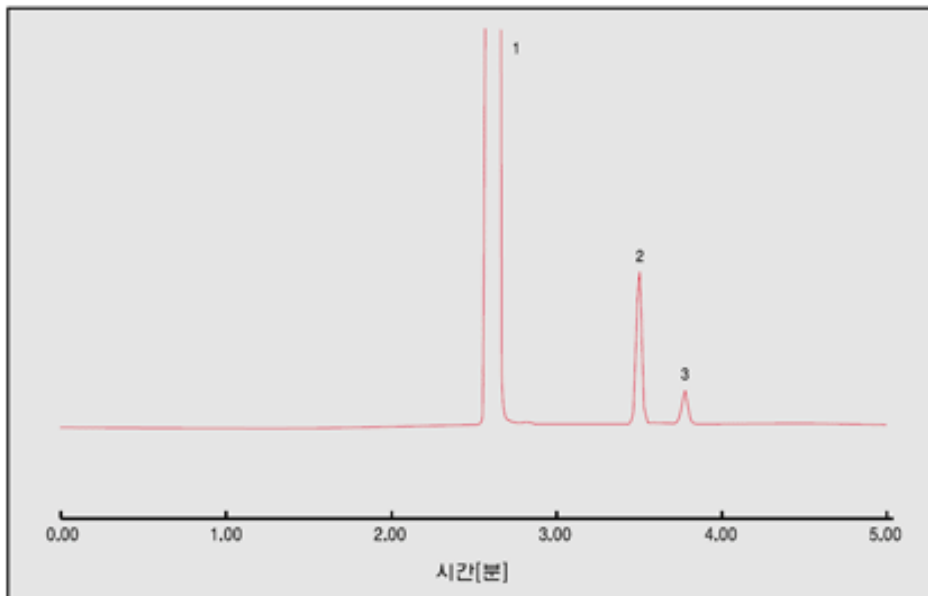
## 기체시료 분석 – N2O, CO2

### 1. 분석 조건

**Oven :** 50° C  
**Column :** HP-PLOT Q(30m\*0.53mm)  
**Carrier gas :** He, 15ml/min

**Injector :** Capillary 150° C  
**Detector :** PDD 200° C  
**Injection Volume :** Gas 1ml 주입

### 2. 크로마토그램



### 3. 분석 피크 정보

- 1) O2, N2
- 2) CO2
- 3) N2O