



일반적인 가스시료 분석

1. 분석 조건

Oven :

1단계: 35°C(7min) → 5°C/min(승온) → 150°C(1min)

Column : Carbosieve 80/100 6ft*1/8"

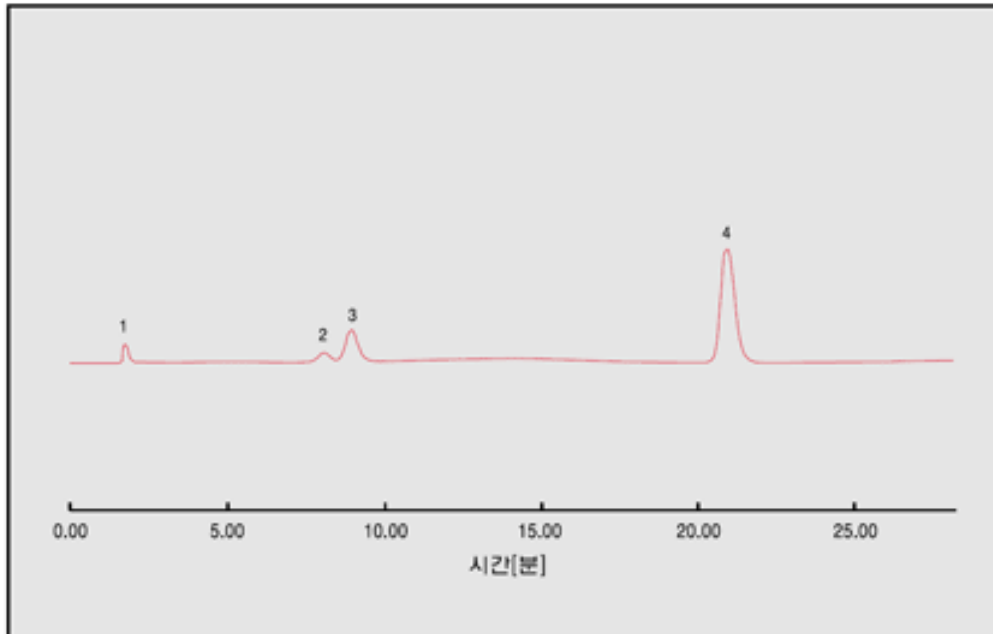
Carrier gas : Ar, 20ml/min

Injector : Packed 150°C

Detector : TCD 150°C

Injection Volume : Gas 1ml 주입

2. 크로마토그램



3. 분석 피크 정보

- 1) H₂
- 2) O₂
- 3) N₂
- 4) CH₄