



Toga 시스템을 이용한 표준 가스시료 분석

1. 분석 조건

Oven :

1단계: 35°C(7분) → 20°C/min(승온) → 155°C(0분)
2단계: 155°C(0분) → 10°C/min(승온) → 160°C(0.3분)
3단계: 160°C(0.3분) → 60°C/min(강하) → 35°C(1.7min)

Column :

Molecular sieve 5A, 1/8", 3ft, 60/80 mesh
Porapak N, 1/8"*10ft, 60/80 mesh

Carrier gas : Ar, 10ml/min

Injector : 200°C

Detector :

TCD(200°C), FID(250°C) (직렬 연결)

Methanizer : 350°C

Injection Volume : 0.25ml

Valve Program

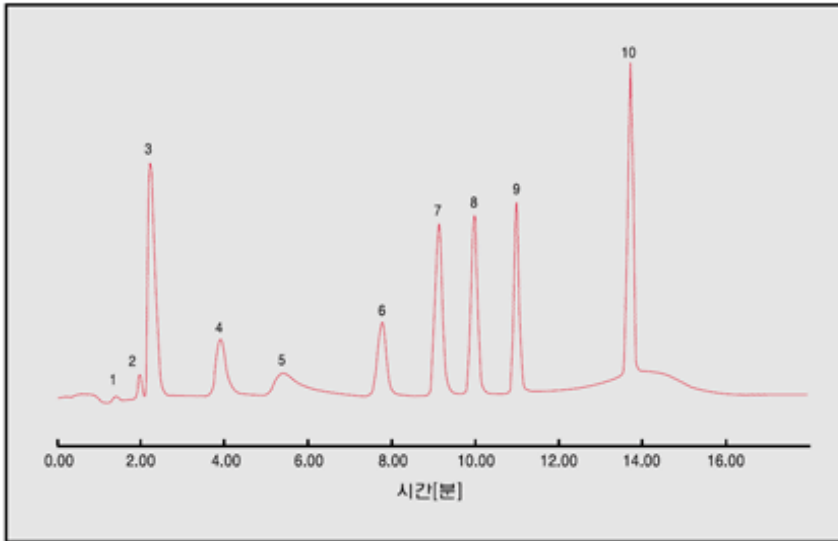
초 기 : GSV 1 → Off, GSV 2 → Off

0.1min : GSV 1 → On

7.0min : GSV 2 → On

Signal Change : 2.8min(TCD → FID)

2. 크로마토그램



3. 분석 피크 정보

- | | |
|--------------------|-----------------------------------|
| 1) H ₂ | 6) CO ₂ |
| 2) O ₂ | 7) C ₂ H ₄ |
| 3) N ₂ | 8) C ₂ H ₆ |
| 4) CH ₄ | 9) C ₂ H ₂ |
| 5) CO | 10) C ₃ O ₆ |

