

도료 중 일반용제 분석 (Dichloromethane, Ethylbenzene, Xylene)

1. 분석 조건 :

Oven : 35℃ (5min 유지) – 승온 7℃/min – 230℃ (5min 유지)

Column : HP-INNOWAX(30m*0.53mm*1.0um)

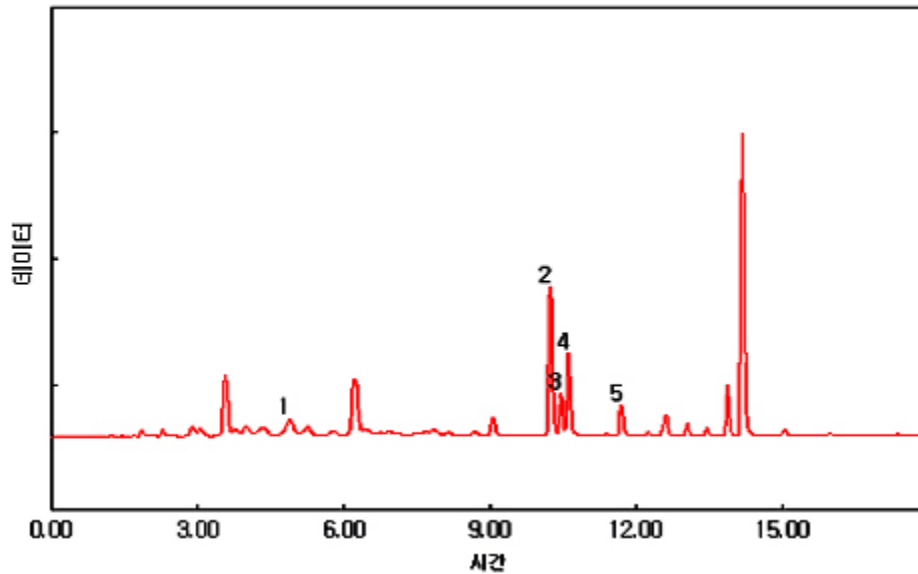
Carrier gas : He, 6.0 ml/min (Split ratio 10:1)

Injector : Capillary 230℃

Detector : FID 250℃

Headspace법 (80℃, 30min 가열) Gas 1ml 주입

2. 분석 크로마토그램



3. 분석 피크 정보

- 1) Dichloromethane
- 2) Ethyl benzene
- 3) p-Xylene
- 4) m-Xylene
- 5) o-Xylene

