

일반용제 분석 (EA, Methanol, 2-propanol, Toluene)

1. 분석 조건 :

Oven : 35℃ (5min 유지) – 승온 10℃/min – 200℃ (5min 유지)

Column : HP-INNOWAX(30m*0.53mm*1.0um)

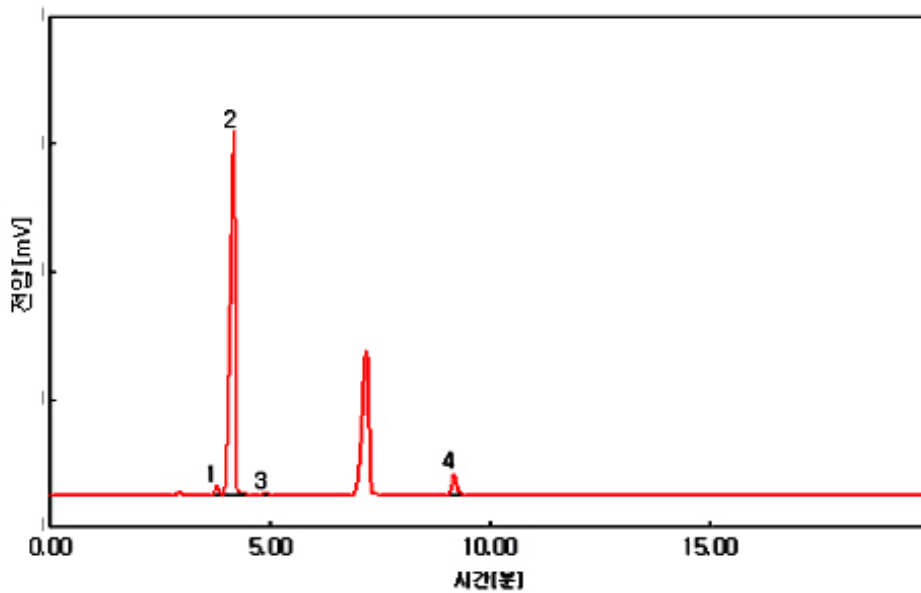
Carrier gas : He, 6.0ml/min (Split ratio 10:1)

Injector : Capillary 230℃

Detector : FID 250℃

Headspace법 (80℃ , 30min 가열) Gas 1ml 주입

2. 분석 크로마토그램



3. 분석 피크 정보

- 1) Ethyl Acetate
- 2) Methanol
- 3) 2-Propanol
- 4) Toluene

