

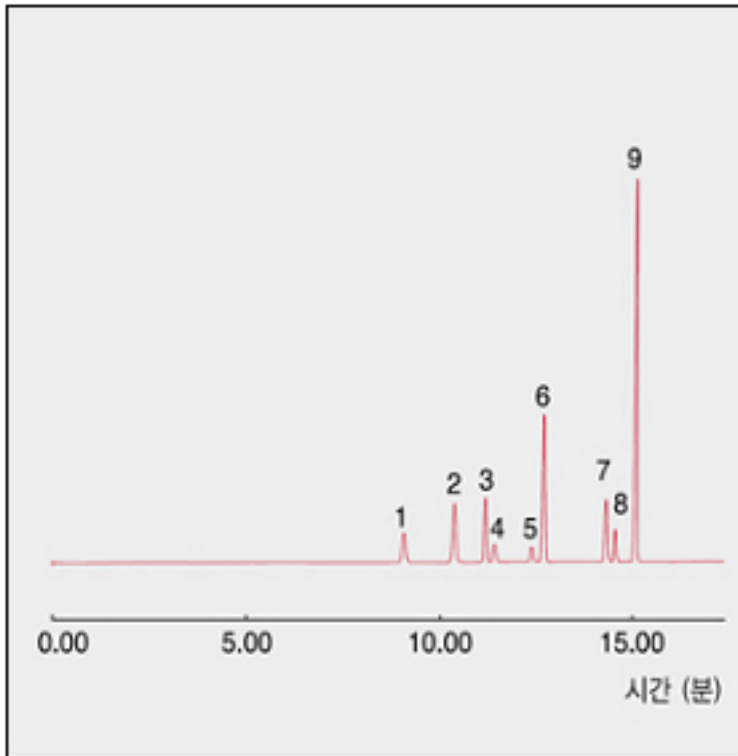


일반 혼합용제 분석

1. 분석 조건

Oven : 35°C (8 min 유지)–승온 10°C/min–150°C (5 min 유지)
 Column : HP–Innowax (30m*0.32mm*0.5um)
 Carrier gas : He, 1.0 ml/min (Split ratio 50:1)
 Injector : Capillary 230°C
 Detector : FID 250°C

2. 분석 크로마토그램



3. 분석 피크 정보

- 1) Acetone
- 2) THF
- 3) Ethyl Acetate
- 4) Methanol
- 5) Methylene chloride
- 6) Benzene
- 7) Acetonitrile
- 8) Chloroform
- 9) Toluene