

APPLICATION NOTE

Analysis of CH₂Cl₂ in Coated Tablet

1. Analysis Condition

Acme6000 Series

Oven : 35°C(5min) –> Increasing Temp. 10°C/min –> 200°C(1min)

Column : HP-INNOWAX(30m*0.53mm*1.0um)

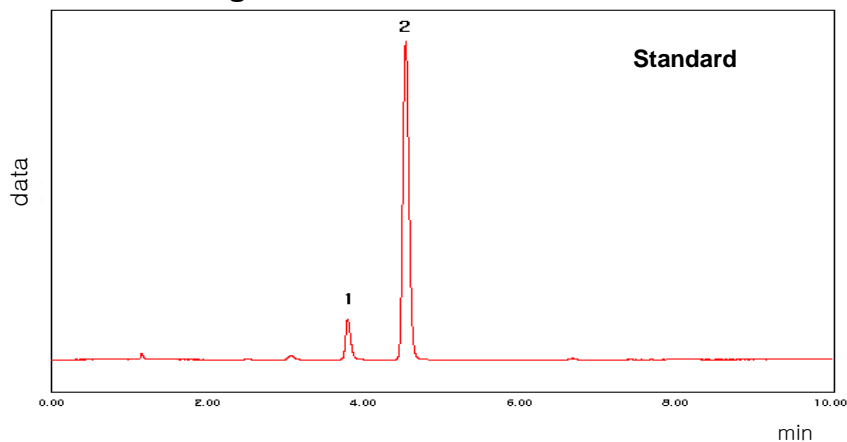
Carrier gas : He, 6ml/min (Split ratio 5:1)

Injector : Capillary 230°C

Detector : FID 250°C

Headspace : 80 °C, 60min Heating, Inject Gas 1ml

2. Chromatogram



1. CH₂Cl₂
(Methylene Chloride)
2. Methanol

