



## Analysis of Haloacetic Acid

### Analysis Condition

**Sample Information:** Supelco EPA 552 Halogenated Acetic Acids Mix. (Cat. No.: 48047)

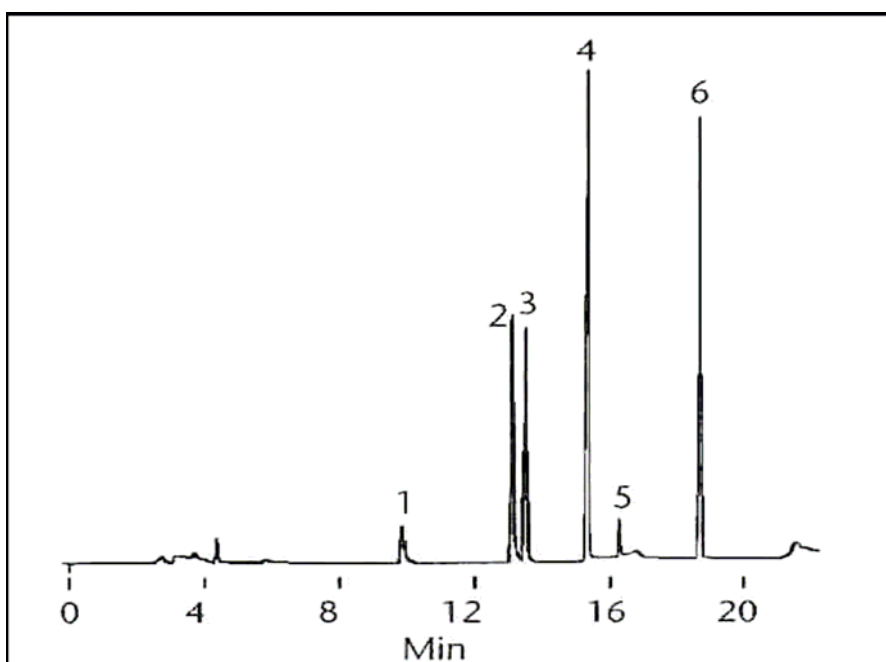
**Sample:** 1ul MTBE(20ug/ml bromochloroacetic acid, all others 200ng/ml each), split(2:1), 200 °C

**Column:** SPB-1701, 30m x 0.32 mm ID, 0.25um film

**Oven temp.:** 50 °C(10min) to 120 °C at 10 °C/min, hold 3 min

**Detector:** PDECD, 300 °C

**Carrier gas:** He, 25cm/sec



1. Chloroacetic acid m.e.
2. Bromoacetic acid m.e.
3. Dichloroacetic acid m.e.
4. Trichloroacetic acid m.e.
5. Bromochloroacetic acid m.e.
6. Dibromoacetic acid m.e.