



Analysis of Fatty Acid Methyl Esters (FAMES)

Injector: Capillary (260°C)

Detector: FID (260 °C)

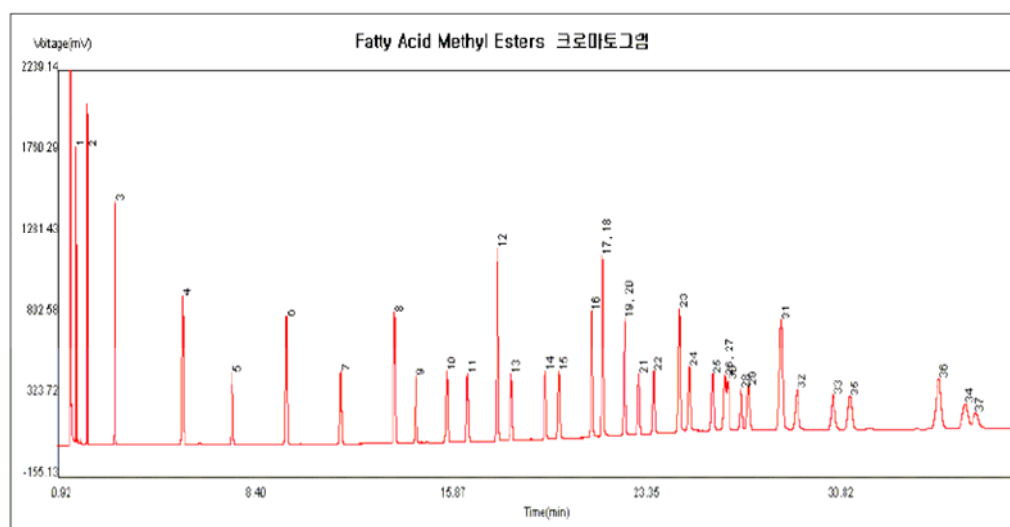
Column: HP-Innowax (30m x 0.53mm x 1.0 um)

Flow rate: Column flow 5ml/min (Split ratio 20:1)

Sample: Fatty Acid Methyl Esters

Inj. Volume: 1ul (Liquid)

Oven Program. : 140 °C(5min) → 5 °C/min → 240 °C (20min)



- | | | | |
|---------------------------|----------------------------------|---|---|
| 1. C4:0 (Butyric) | 11. C15:1 (cis-10-Pentadecenoic) | 21. C18:3n6 (_-Linolenic) | 30. C21:0 (Henicosanoic) |
| 2. C6:0 (Caproic) | 12. C16:0 (Palmitic) | 22. C18:3n3 (_-Linolenic) | 31. C22:0 (Behenic) |
| 3. C8:0 (Caprylic) | 13. C16:1 (Palmitoleic) | 23. C20:0 (Arachidic) | 32. C22:1n9 (Erucic) |
| 4. C10:0 (Capric) | 14. C17:0 (Heptadecanoic) | 24. C20:1n9 (cis-11-Eicosenoic) | 33. C22:2 (cis-13,16-Docosadienoic) |
| 5. C11:0 (Undecanoic) | 15. C17:1 (cis-10-Heptadecenoic) | 25. C20:2 (cis-11,14-Eicosadienoic) | 34. C22:6n3 (cis-4,7,10,13,16,19-Docosahexaenoic) |
| 6. C12:0 (Lauric) | 16. C18:0 (Stearic) | 26. C20:3n6 (cis-8,11,14-Eicosatrienoic) | 35. C23:0 (Tricosanoic) |
| 7. C13:0 (Tridecanoic) | 17. C18:1n9c (Oleic) | 27. C20:3n3 (cis-11,14,17-Eicosatrienoic) | 36. C24:0 (Lignoceric) |
| 8. C14:0 (Myristic) | 18. C18:1n9t (Elaidic) | 28. C20:4n6 (Arachidonic) | 37. C24:1n9 (Nervonic) |
| 9. C14:1 (Myristoleic) | 19. C18:2n6c (Linoleic) | 29. C20:5n3 (cis-5,8,11,14,17-Eicosapentaenoic) | |
| 10. C15:0 (Pentadecanoic) | 20. C18:2n6t (Linolelaidic) | | |