

APPLICATION NOTE

Analysis of Remaining solvent in Pharmacy materials

1. Analysis Condition

Acme6000 Series

Oven : 35°C(8min) → Increasing Temp. 5°C/min → 150°C(0.1 min)

→ Increasing Temp. 10°C/min → 200°C(5min)

Column : HP-INNOWAX(30m*0.53mm*1.0um)

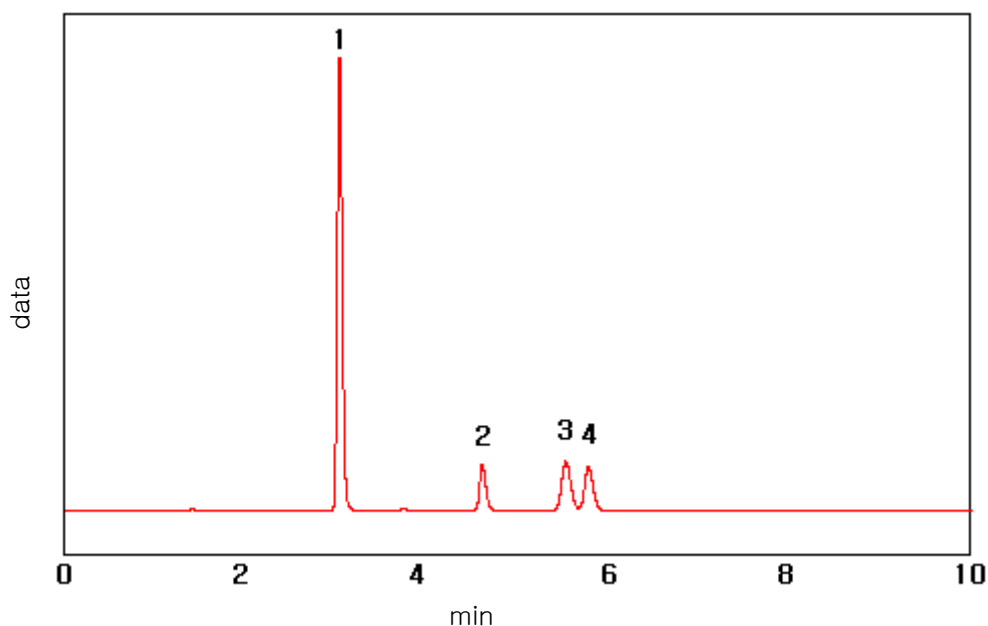
Carrier gas : He, 5ml/min (Split ratio 5:1)

Injector : Capillary 230°C

Detector : FID 250°C

Headspace : 80°C, 60min Heating, Inject Gas 1 ml

2. Chromatogram



1. Acetone
2. Methanol
3. 2-Propanol
4. Ethanol

