

# APPLICATION NOTE

## Analysis of Butane Gas

### 1. Analysis Condition

#### *Acme6000 Series*

Oven : 60°C (Holding 1 min)–Increasing Temp. 10°C/min–150 °C(Holding 10 min)

Column : Porapak N

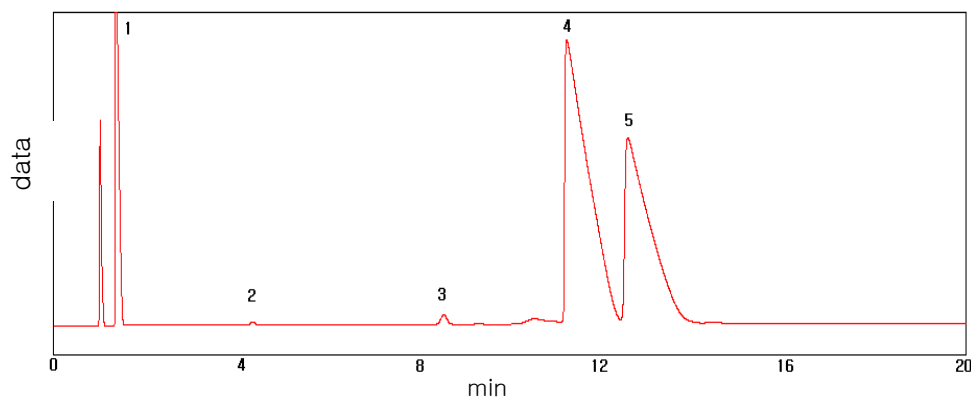
Carrier gas : He, 20 ml/min

Injector : Packed 150°C

Detector : TCD 150 °C(Sen 6, Range=0), FID 250°C(Range=7)

Injection Volumn : 250ul sample loop (Using Valve)

### 2. Chromatogram



1. Methane
2. Ethane
3. Propane
4. iso-Butane
5. n-Butane

