

APPLICATION NOTE

Analysis of CF_4

1. Analysis Condition

Acme6000 Series

Oven : 35°C (5min) $\rightarrow 15^\circ\text{C}/\text{min} \rightarrow 100^\circ\text{C}$ (1min)

Column : Molsieve 13X

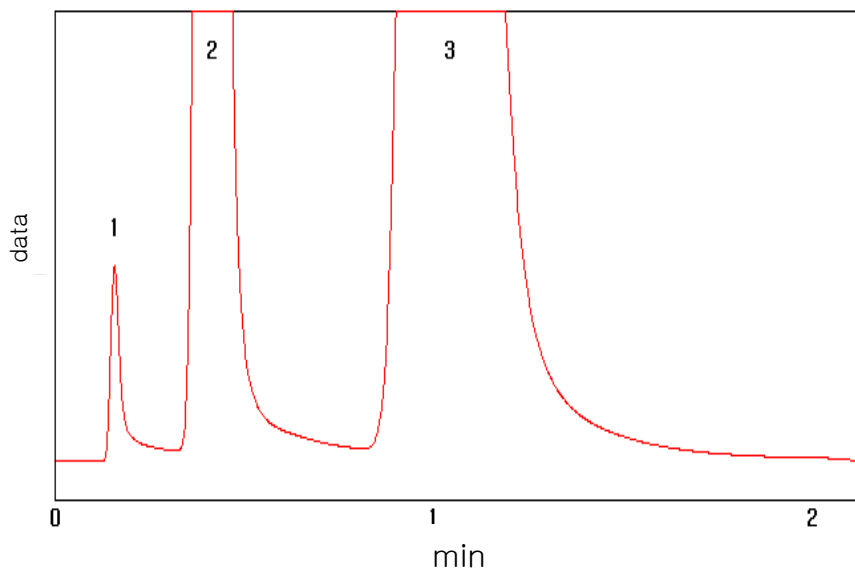
Carrier gas : He, 15 ml/min

Injector : Packed 150°C

Detector : PDHID 160°C

Injection Volume : Gas 0.5ml

2. Chromatogram



1. CF_4
2. O_2
3. N_2

