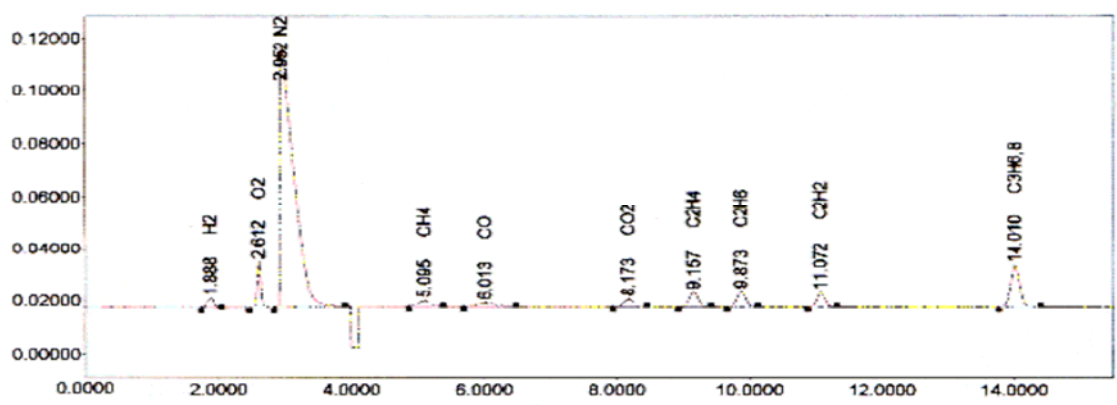




## Analysis of Standard Gas using TOGA System

<b>Injector</b>	Gas sampling Valve (120 °C)-250 ul
<b>Column 1</b>	Porapak N 1/8 " x 10 ft, 60/80 mesh
<b>Column 2</b>	Molecular sieve 13X 1/8 "x 3 ft, 60/80 mesh
	Pass through only Column 1 using column switch valve after 7 min. of starting to analyze.
<b>Carrier Gas</b>	High purity Ar, 15 ml/min
<b>FID gas</b>	Air 300 ml/min, H <sub>2</sub> 30ml/min
<b>Temperature</b>	Oven temp.: 35 °C (5 min)-> 15 °C/min-> 175 °C (10 min)
	Metanizer: 350 °C
	TCD : 200 °C
	FID : 200 °C
<b>Valve</b>	Initial - GSV off, GSV2 off
	Transform - 0.1 min GSV 1 On, 7 min GSV 2 On
<b>Transformation</b>	APC mode 4.0 min (TCD-->FID) Sue AT-2000 program



TOGA System