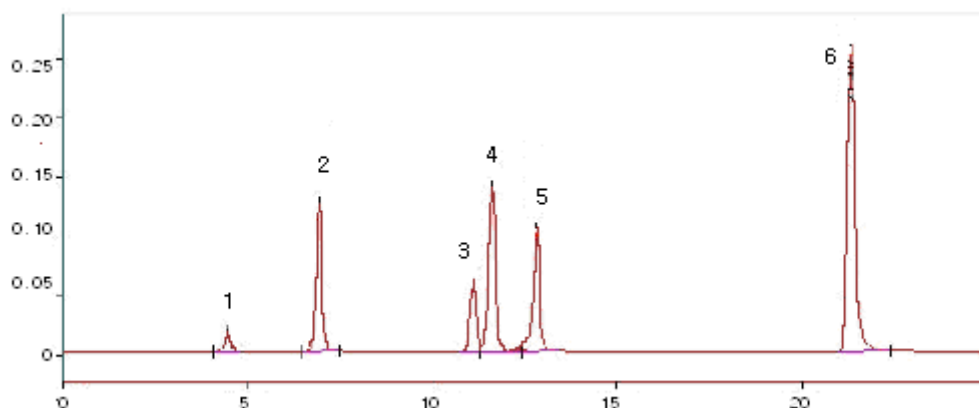




## Analysis of Aromatic Compounds in Gasoline



1. Benzene
2. Toluene
3. Ethylbenzene
4. m,p-Xylene
5. o-Xylene
6. C9+

**Column:** HP-1(30m x 0.53mm x 2.65um)

ICEP(560mm x 0.38mm id. 20% on chromosorb PAW 80/100)

**Oven temp. (Isothermal) :** 60°C(6min) - 2°C/min - 120°C(5min)

**Detector:** FID

**Inj. temp. :** 200°C

**Det. temp. :** 250°C

**Column Flow:** 10ml/min

**Injection Volume:** 1ul

**Valve temp. :** 80°C

**Carrier gas:** He

**Valve ON time:** 0.7min

**Valve OFF time:** 15min

**Split vent:** 100ml/min

**Split ratio:** 1/11

**Range:** 5



Acme 6000M GC