



## *On-Line Analysis of Trace Level Impurities for Semi-Conductor Process Gases*

### **Analysis Condition**

**Column 1** : Porapack Q

**Column 2** : CTR III(Alltech Inc.)

**Valve** : Automatic 10-port valve

**Sample loop** : 5 ml

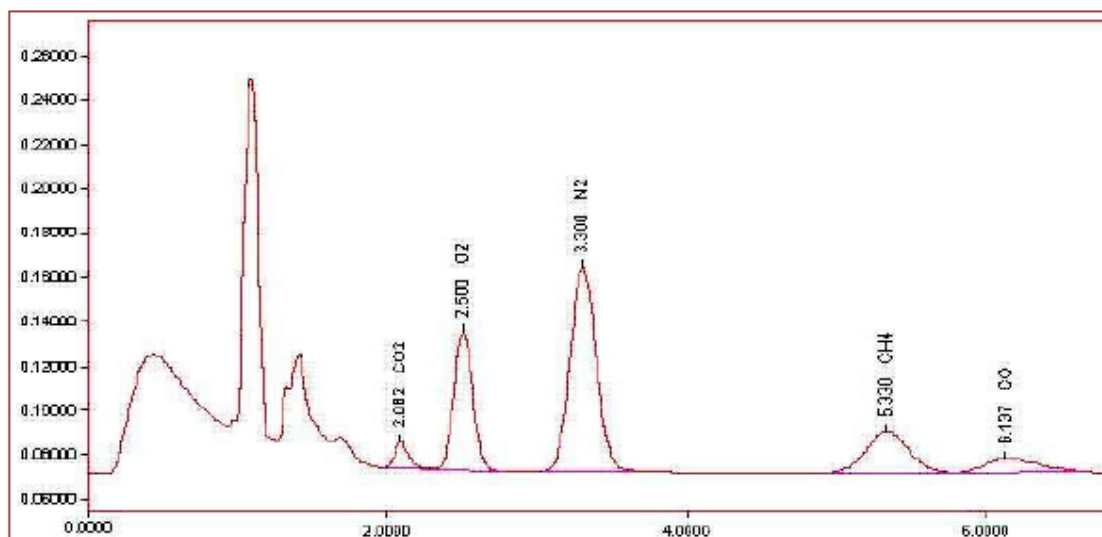
**Detector** : PD-HID(Valco Inc.)

**Oven temperature** : 50°C

**Detector temperature** : 90°C

**Column flow** : 50 ml/min

**Valve on/off time** : 0.1/1.4



Chromatogram for C<sub>3</sub>F<sub>8</sub> impurities