



Analysis of Pesticide restricted by KDWR (Korean Drinking Water Regulation)

Analysis Condition

Column: HP-1 (30m x 0.25 mm i.d. x 0.25 um)

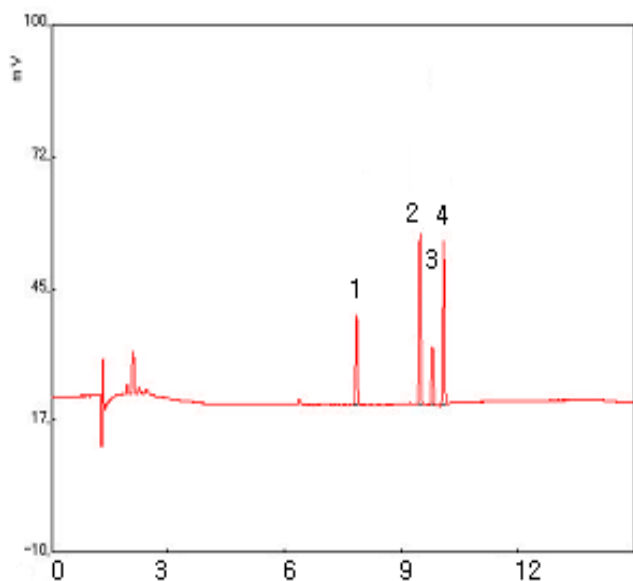
Injector: Temp 250°C

Detector: NPD Temp: 300°C

Split ratio: 10:1 Range: 3

Column flow: 20 psi

Oven temp.: 150°C(1min) → 8°C/min → 250°C(10min)



1. Diazinon
2. Fenitrothion
3. Malathion
4. Parathion