



Analysis of Flavors

► Analysis Condition

Acme6100 Series

Oven : 60°C (2 min)- 10 °C/min-220 °C(2 min)

Column : AN-1(30m*0.32mm*0.5um)

Carrier gas : He, 1.0 ml/min (Split ratio 20:1)

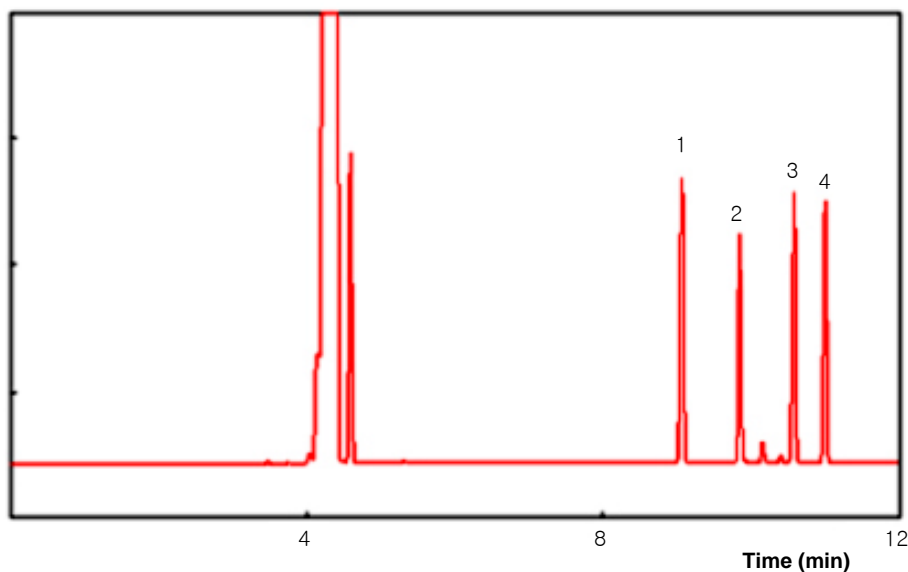
Injector : Capillary 250°C

Detector : FID 250°C

Sample : 1,6-Dichlorohexane STD & Sample

Injection Volume : 1.0ul (Liquid)

► Chromatogram



- 1) α -Pinene
- 2) Myrcene
- 3) d-Limonene
- 4) r-Terpinene

