

## Analysis of Sugar in Honey



### 1. Condition

#### *Acme 9000 Series HPLC*

Mobile Phase : ACN:Water=75:25 (Isocratic mode)

Flow Rate : 1.5ml/min

Column Oven : 35°C

Detector : ELSD

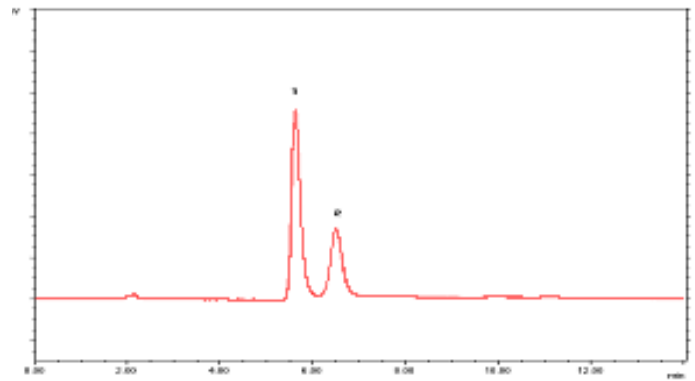
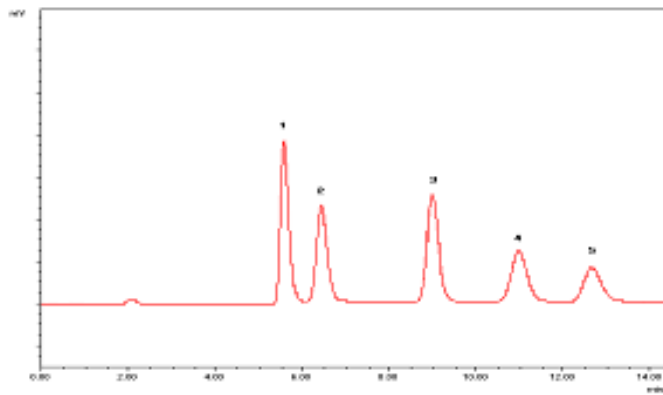
Column : Carbohydrate (4.6\*250mm)

Injection Volumn : 20ul sample loop

### 2. Chromatogram

< Standard >

< Example >



Time

Time

1) Fructose    2) Glucose    3) Sucrose    4) Maltose    5) Lactose

