

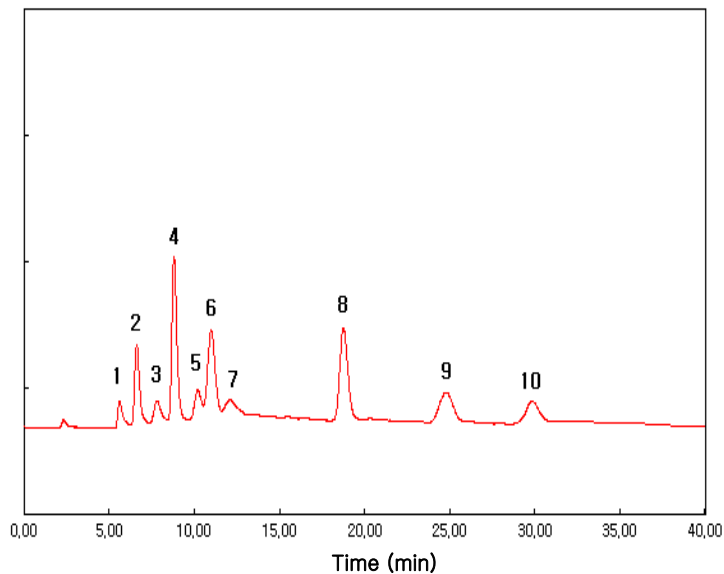


Subject : Analysis of Carbohydrate Mixture

► Analysis Condition

Column : Carbohydrate (4.6*250mm)
Detector : ELSD-Range 1/2, gas 1.5L/min, Temp 55 °C
Injection Volume : 20 μ l
Mobile Phase : Acetonitrile : Water = 80 :20
Flow Rate : 1.5ml/min
Column Oven : 35 °C

► Chromatogram



► Peak Lists

- | | |
|-------------------|-------------------|
| 1) D(-) Ribose | 6) D(+) Glucose |
| 2) D(+) Xylose | 7) D(+) Galactose |
| 3) D(-) Arabinose | 8) Sucrose |
| 4) D(-) Fructose | 9) Maltose |
| 5) D(+) Mannose | 10) Lactose |

