

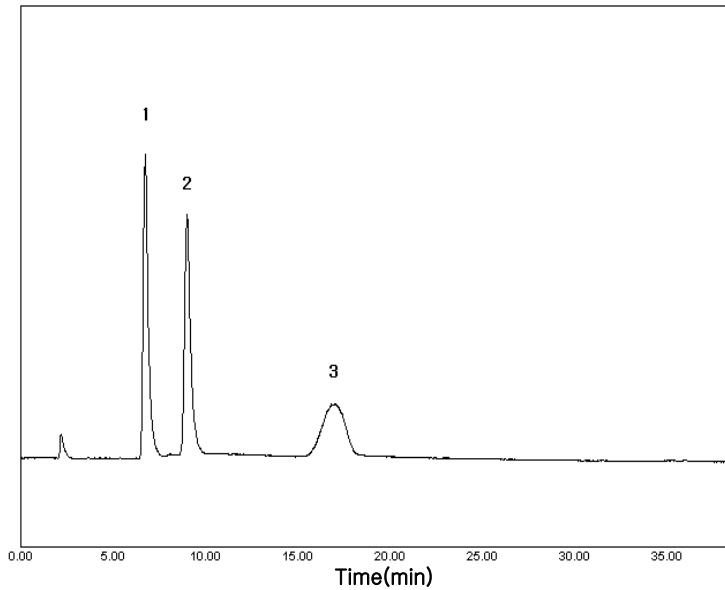


## Subject : Analysis of Xylitol, Sorbitol and Maltose

### ► Analysis Condition

Column : Carbohydrate (4.6\*250mm)  
Detector : ELSD-Range 1/4, gas 2L/min, Temp 60 °C  
Injection Volume : 20  $\mu$ l  
Mobile Phase : Acetonitrile : Water = 80 :20  
Flow Rate : 1.5ml/min  
Column Oven : 35 °C

### ► Chromatogram



### ► Peak Lists

- 1) Xylitol
- 2) Sorbitol
- 3) Maltose

