

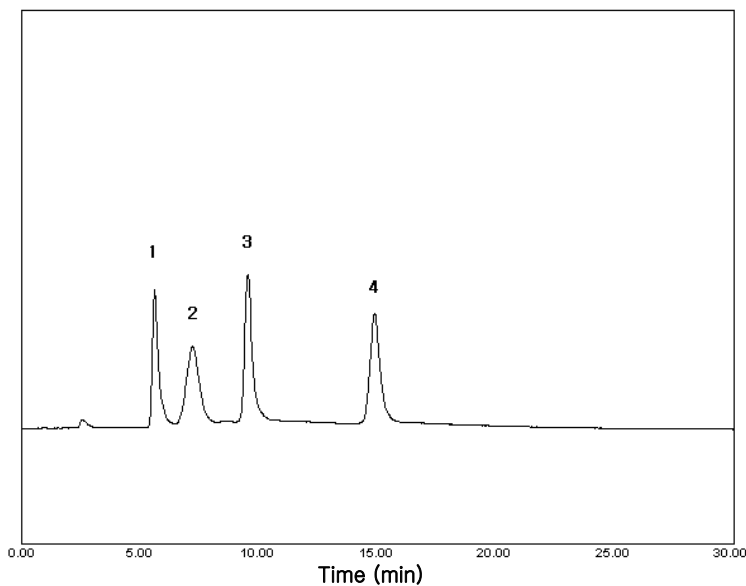


Subject : Analysis of Ribose, Xylose, Xylitol and Mannitol

► Analysis Condition

Column : Carbohydrate (4.6*250mm)
Detector : ELSD-Range 1/4, gas 2L/min, Temp 60 °C
Injection Volume : 20 μ l
Mobile Phase : Acetonitrile : Water = 85 :15
Flow Rate : 1.5ml/min
Column Oven : 35 °C

► Chromatogram



► Peak Lists

- 1) Ribose
- 2) Xylose
- 3) Xylitol
- 4) Mannitol

