

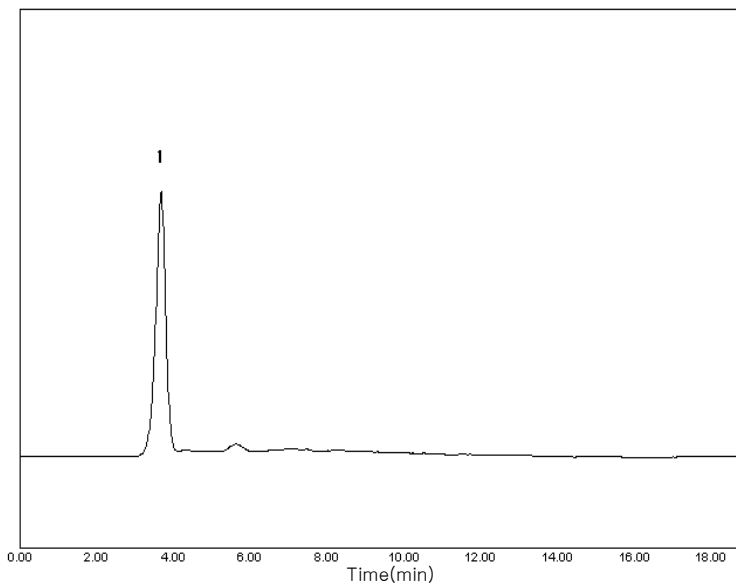


Subject : Analysis of Glucosamine

► Analysis Condition

Column : Carbohydrate (3.9*300mm)
Detector : ELSD-Range 1/4, gas 2L/min, Temp 60°C
Injection Volume : 20 μ l
Mobile Phase : Acetonitrile : Water = 70 :30
Flow Rate : 1.5ml/min

► Chromatogram



► Peak Lists

1) Glucosamine

