

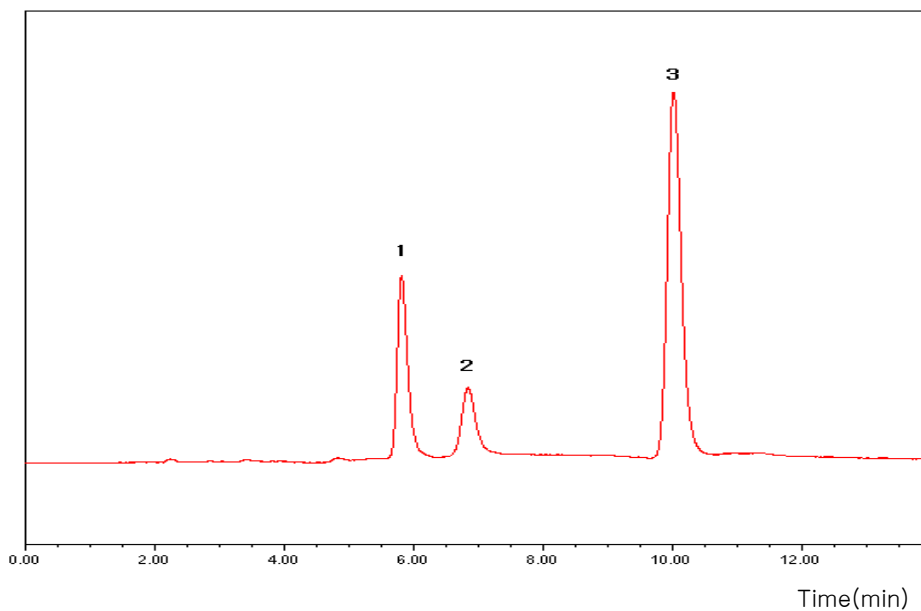


## Subject : Analysis of sugars in molasses

### ► Analysis Condition

Column : Carbohydrate (4.6\*250mm)  
Detector : ELSD-Range 1/2, gas 1.5L/min, Temp 55 °C  
Injection Volume : 20  $\mu$ l  
Mobile Phase : Acetonitrile : Water = 75 :25  
Flow Rate : 1.5ml/min

### ► Chromatogram



### ► Peak Lists

- 1) Fructose
- 2) Glucose
- 3) Sucrose

