



## Vitamin B<sub>12</sub> in Tablet – Switching System

### 1. Analysis Condition

#### **YL9100 Series Vitamin Analyzer**

Column : Guard column C 8, 4.6X150mm, 5 $\mu$ m

Intermediate column C18, 2.0X35mm, 5 $\mu$ m

Analytical column C18, 1.5X250mm, 5 $\mu$ m

Detector : UV/Vis Wavelength : 361 nm

Mobile phase : Guard Column  $\rightarrow$  (10mM NaH<sub>2</sub>PO<sub>4</sub> + 10mM Na<sub>2</sub>HPO<sub>4</sub>= pH6.7-6.8)

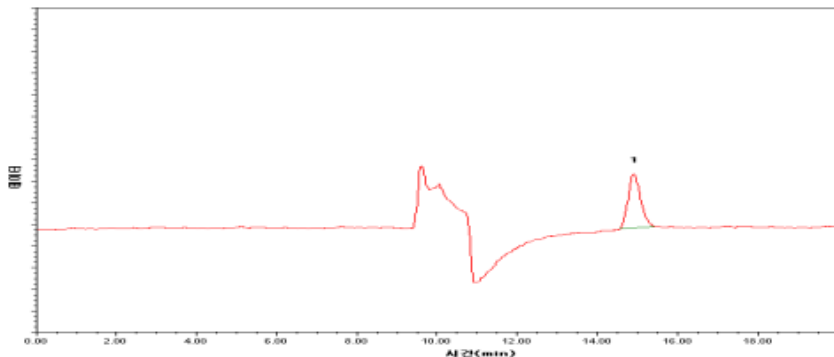
Analytical Column  $\rightarrow$  MeOH : Solvent for Guard Column = 23:77

Flow rate : 0.4~0.5ml/min (Guard Column), 0.1ml/min (Analytical Column)

Switching time : 4.0 ~ 6.0min, Injection volume : 200ul

### 2. Chromatogram

Standard



1. Vitamin B<sub>12</sub>

Sample

