



APPLICATION NOTE

Subject : Standard sample analysis of water-soluble Vitamin

▶ Analysis condition

Mobile phase : A=H₂O 1L + pic7 10ml,

B=MeOH:mobile phase A(45:55) / Gradient

Min	A	B
Initial	100	0
41	0	100
44	0	100
46	100	0

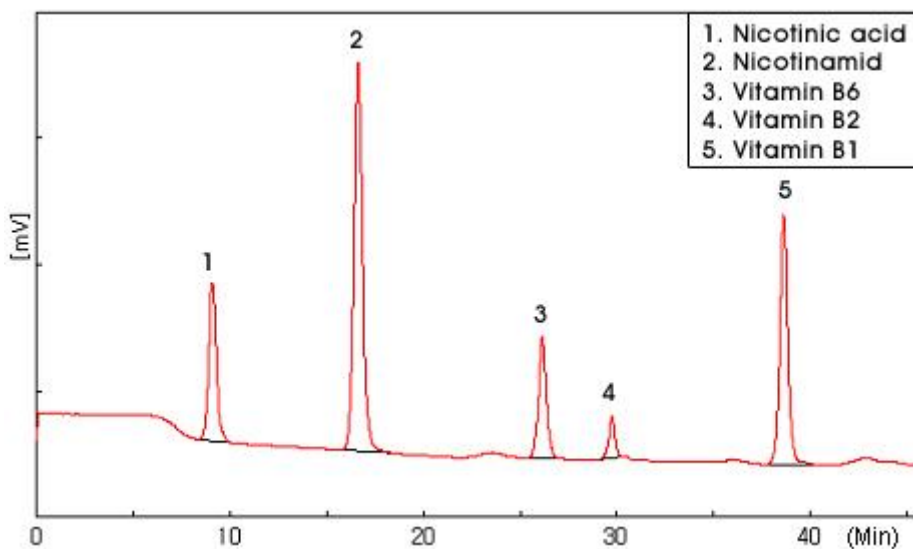
Flow rate : 1ml/min

Detection wavelength : 270 nm

Sample injection : 20uL

Column temperature : 40℃

▶ Chromatogram



<Fig 1. Standard Sample Analysis of Water-Soluble Vitamin>



영린기기

431-836 경기도 안양시 동안구 호계2동 899-6 Tel : 031-428-8700 Fax : 031-428-8787
 Homepage : www.younglin.com E-mail : sales@younglin.com