



## APPLICATION NOTE

### Subject : Analysis of Formaldehyde in Indoor Air of New Building

#### ▶ Analysis condition

Mobile phase : A(Ethanol)70/ B(Water)30

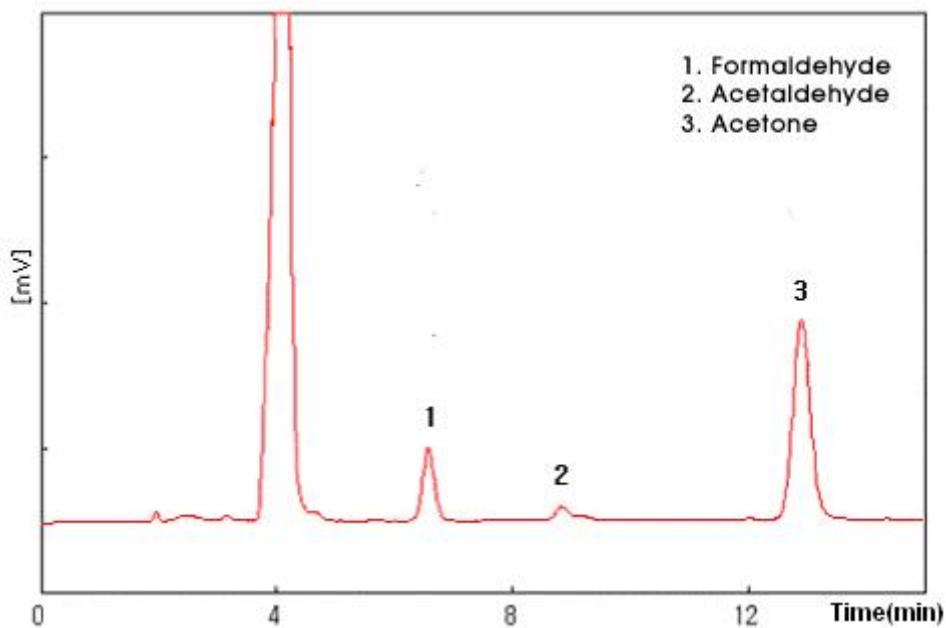
Flow rate : 1.3 ml/min

Detection wavelength : 360nm

Sample injection : 20uL

Column : Atlantis dC18(4.6mm\*250mm)

#### ▶ Chromatogram



영린기기

431-836 경기도 안양시 동안구 호계2동 899-6 Tel : 031-428-8700 Fax : 031-428-8787  
Homepage : [www.younglin.com](http://www.younglin.com) E-mail : [sales@younglin.com](mailto:sales@younglin.com)