



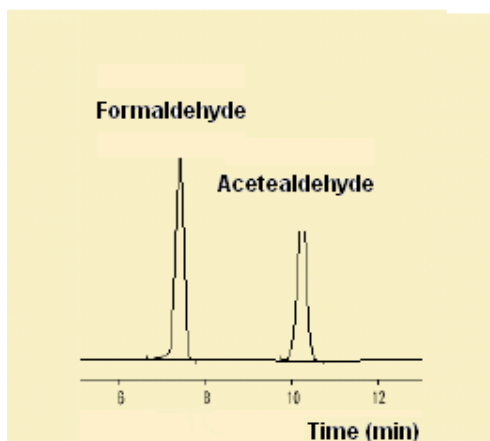
## APPLICATION NOTE

Subject : The Analysis of Aldehyde/Ketonic in Indoor Air

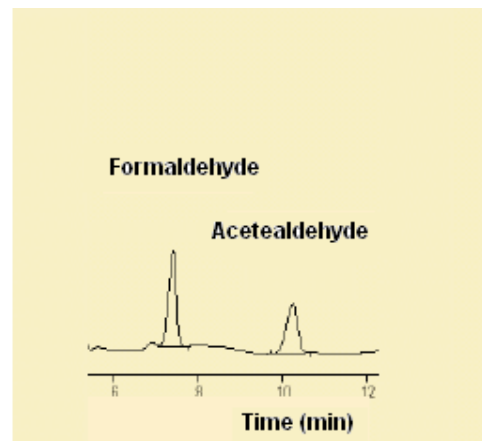
### ▶ Analysis condition

Column: 250\*4.6mm Zorbax Column  
Mobile phase : CH<sub>3</sub>CN/Water : 45/55  
Flow rate : 1.0 ml/min  
Detection wavelength : 360nm  
Sample injection : 20uL  
Detection Wavelength : 360nm

### ▶ Chromatogram



<Fig1. Standard Material Analysis>



<Fig. Analysis of Indoor Air of New Building>



영린기기

431-836 경기도 안양시 동안구 호계2동 899-6 Tel : 031-428-8700 Fax : 031-428-8787  
Homepage : [www.younglin.com](http://www.younglin.com) E-mail : [sales@younglin.com](mailto:sales@younglin.com)