



APPLICATION NOTE

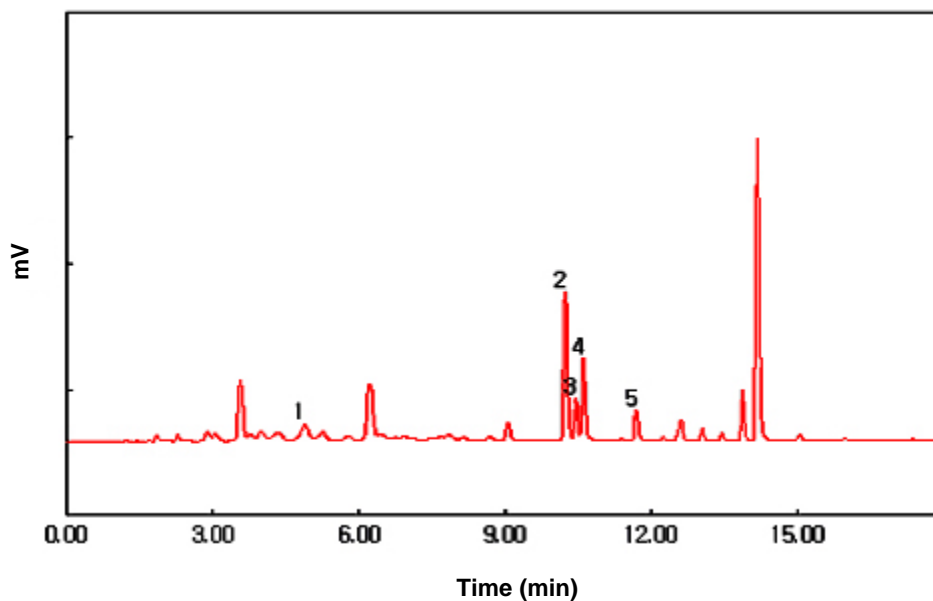
Subject : Analysis of general solvents

(Dichloromethane, Ethylbenzene, Xylene) in Paints

► **Analysis Condition :**

Oven : 35 °C (5min) - 7 °C/min - 230 °C (5min)
Column : HP-INNOWAX(30m*0.53mm*1.0um)
Carrier gas : He, 6.0 ml/min (Split ratio 10:1)
Injector : Capillary 230 °C
Detector : FID 250 °C
Headspace: (80 °C, 30min Heating), Gas 1ml Injection

► **Chromatogram**



► **Peak Lists**

- 1) Dichloromethane
- 2) Ethyl benzene
- 3) p-Xylene
- 4) m-Xylene
- 5) o-Xylene

