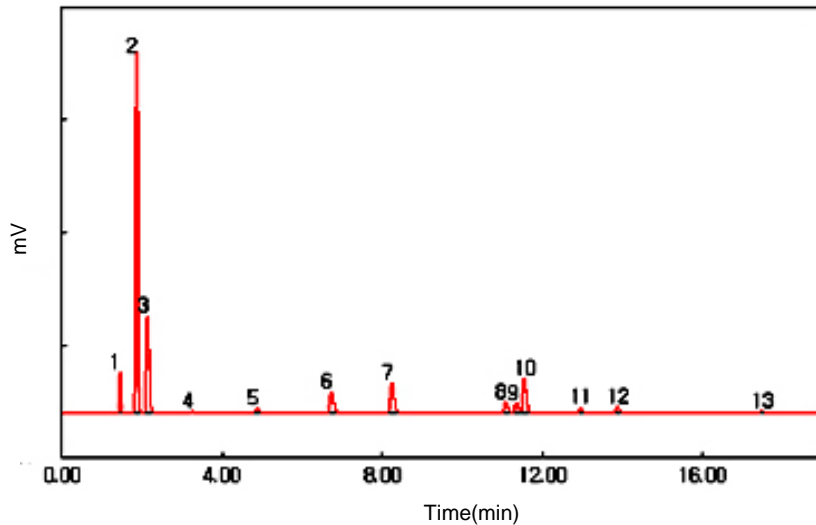


Subject : Analysis of residual solvents in Class 2

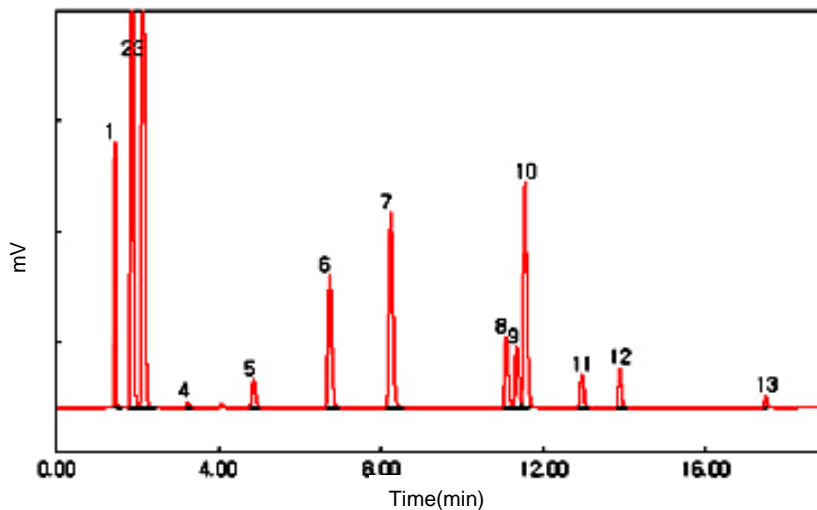
► Analysis Condition

Oven : 35°C (5min) - 5°C/min - 100°C (0.1min)
 - 13°C/min - 200°C (5min)
 Column : HP-INNOWAX (30m*0.53mm*1.0um)
 Carrier gas : He, 6.0 ml/min (Split ratio 5:1)
 Injector : Capillary 230°C
 Detector : FID 250°C
 Headspace : 80°C (60min Heating), Gas 1ml Injection

► Chromatogram



<Zoom-out Chromatogram>



- 1) n-Hexane
- 2) Cyclohexane
- 3) Methyl cyclohexane
- 4) Trichloroethylene
- 5) Dichloromethane
- 6) Dichloroethylene
- 7) Toluene
- 8) Ethyl benzene
- 9) p-Xylene
- 10) m-Xylene
- 11) o-Xylene
- 12) chlorobenzene
- 13) DMF

