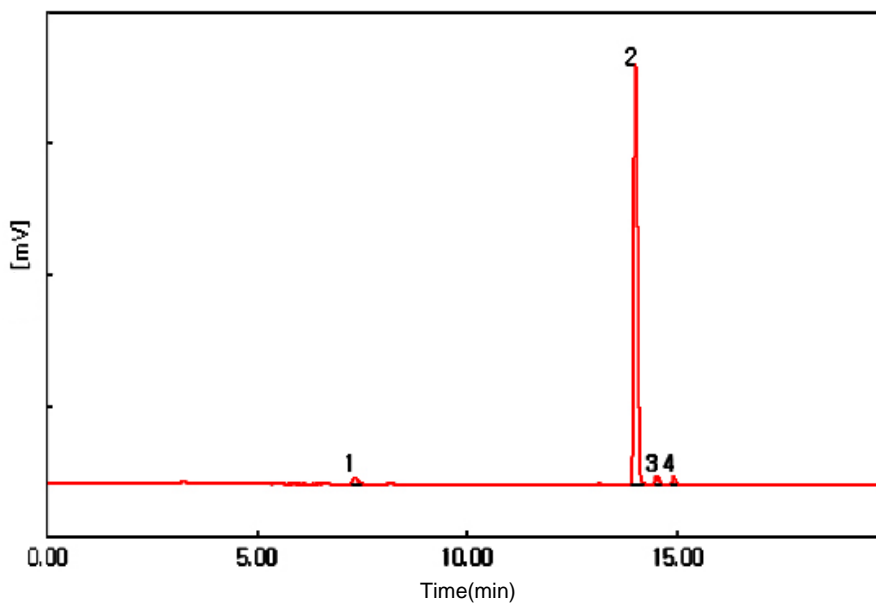


Subject : Analysis of residual solvents on Class 1**► Analysis Condition**

Oven : 40°C (7min) - 10°C/min - 150°C (5 min)
Column : HP-VOC (60m*0.32mm*1.8um)
Carrier gas : He, 3.0 ml/min (Split ratio 5:1)
Injector : Capillary 230°C
Detector : FID 250°C
Headspace : 80°C (60min Heating), Gas 1ml Injection

► Chromatogram**► Peak lists**

1) 1,1-Dichloroethylene	8 ppm
2) 1,1,1-Trichloroethane	1500 ppm
3) 1,2-Dichloroethane	5 ppm
4) Benzene	2 ppm

(This is the limited concentration in accordance with the law)

