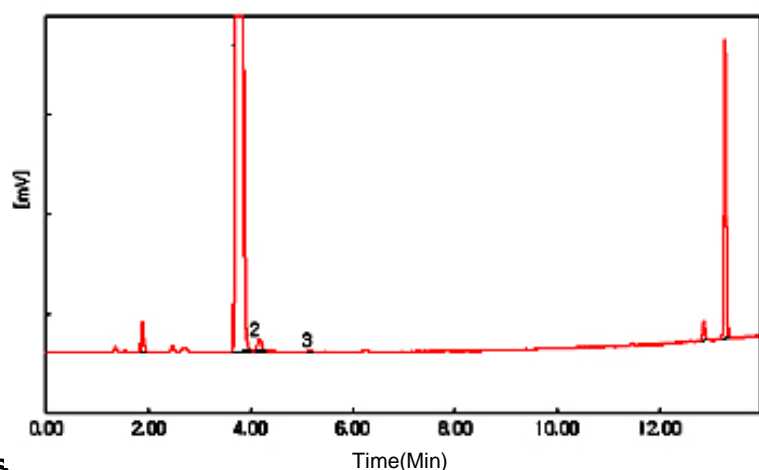
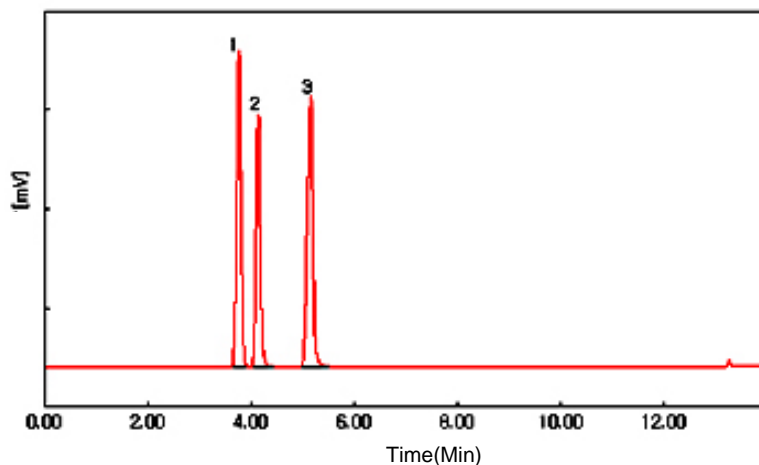


Analysis of Methanol, Ethanol in a Chinese medicine

1. Condition

Oven : 35 °C (5min) – Temperature Programming 10 °C/min - 150 °C (5min)
Column : HP-Innowax (30m*0.53mm*1.0um)
Carrier gas : He, 6.0 ml/min (Split ratio 5:1)
Injector : Capillary 230 °C
Detector : FID 250 °C
Pre-treatment : Headspace – 30min heating, 1ml Injection

2. Chromatogram



3. Peak Lists

- 1) EA (ISTD)
- 2) Methanol
- 3) Ethanol

