



## APPLICATION NOTE

### Subject : Analysis of residuals among the food packing material

#### ▶ Analysis condition

Oven : 35.0C(5 min) → 10.0 °C/min → 150.0 °C(1min)

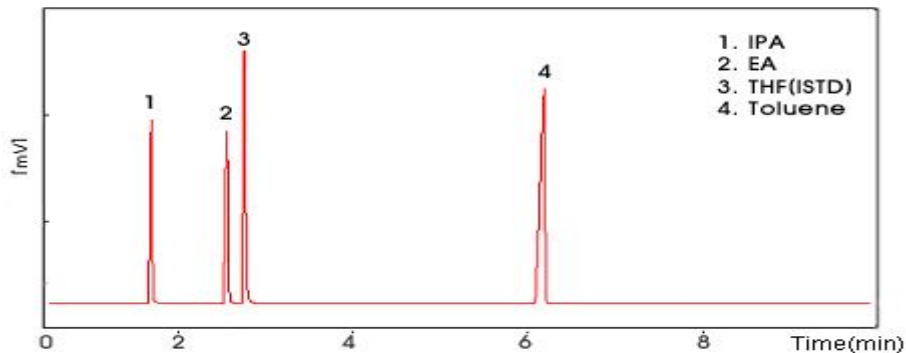
Injection port 1 : Capillary; 230°C, He flow rate=3.0 mL,

Split ratio=10.0; constant flow

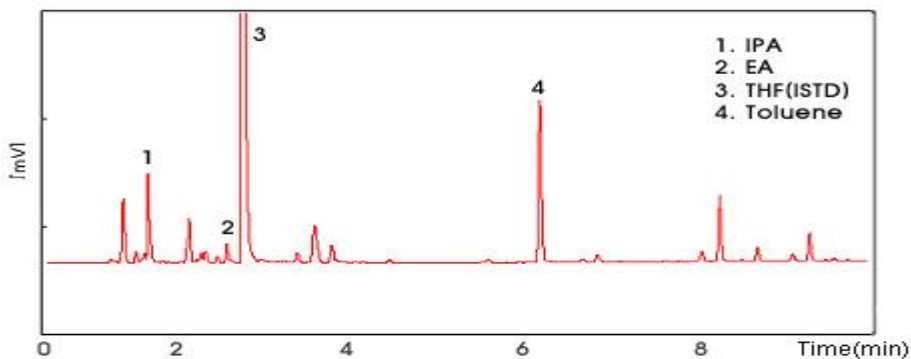
Column 1 : AN-1(30m\*0.32mm\*0.5um)

Detector 1 : FID, 250°C

#### ▶ Chromatogram



<Fig.1>Standard sample Chromatogram



<Fig.2>Sample Chromatogram



영린기기

431-836 경기도 안양시 동안구 호계2동 899-6 Tel : 031-428-8700 Fax : 031-428-8787  
Homepage : [www.younglin.com](http://www.younglin.com) E-mail : [sales@younglin.com](mailto:sales@younglin.com)