

# Younglin Application Note

REF No. : YL-APP-986014

## Subject : Chlorhexidine Gluconate Analysis on Washing Agent

### Key Words

: Chlorhexidine Gluconate Solution(Ch.H.G)



### 1 Introduction

Chlorhexidine gluconate used as raw materials for creamy washing agent was analyzed by HPLC. The agent had strong viscosity was mixed with surfactant and sulfide compounds. It is recommended to use UV/Visible Spectrometer in the published method, however UV/Visible method is not good in accuracy and reproducibility so was HPLC to get more accurate results.

### 2 Instrument

- Younglin 9600 HPLC
- Younglin Autochro-WIN

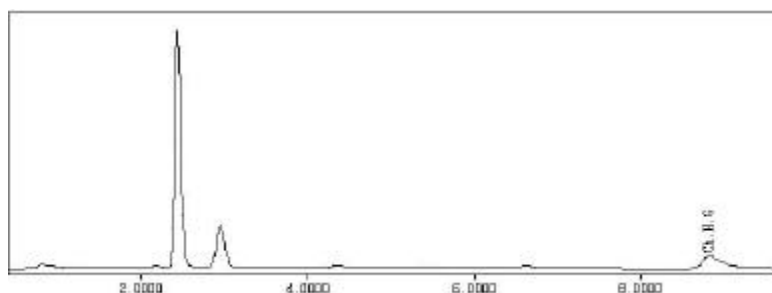
### 3 Analytical Conditions

- Column : Waters Symmetry C18 3.9µ 300 mm
- Flow rate : 1 ml/min
- Mobile Phase : 110 mmole NaClO<sub>4</sub>, 10 mmole H<sub>3</sub>PO<sub>4</sub>, 10mmole NaH<sub>2</sub>PO<sub>4</sub> in Water : Acetonitrile (mixed by 3:2)
- Detector : UV 254nm

### 4 Sample

Compound	Ch.H.G
RT(min)	8.60

### 5 Chromatogram



### 6 Discussion

Chlorhexidine Gluconate is antibiotic so is used for a sterilizer, a disinfectant and a antiseptic agent.