

Younglin Application Note

REF No. : YL-APP-986009

Subject : Reproducibility test of M930 pump

Key Words

: Reproducibility, Benzene, Toluene, %RSD



Instrument

- Younglin 9600L HPLC
- Younglin Autochro-WIN

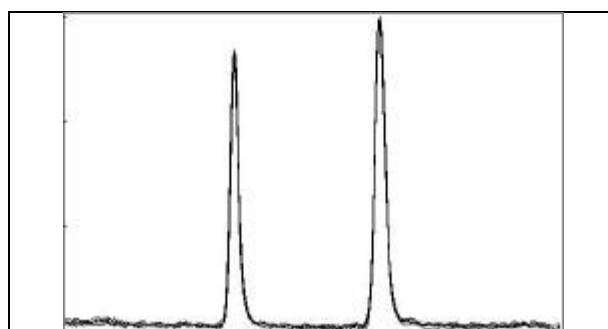
Analysis conditions

- Column : Waters Nova-pak C18 3.9µ 300 mm
- Flow rate : 1 ml/min
- Mobile Phase : Acetonitrile : Water = 6 : 4
- Detector : UV 254nm

Sample : Benzen, Toluene (10, 25, 50ppm)

Chromatogram(Overlap chromatogram n=5)

	Conc., Inj.	Sample	Result
R.T (min)	10ppm, 10ul	Benzen	0.072
		Toluene	0.075
%RSD	10ppm, 20ul	Benzen	0.044
		Toluene	0.039
Area %RSD	10ppm, 10ul	Benzen	0.898
		Toluene	0.832
	10ppm, 20ul	Benzen	0.143
		Toluene	0.914



	Conc., Inj,	Sample	Result
R.T (min)	25ppm, 10ul	Benzen	0.081
		Toluene	0.088
%RSD	25ppm, 20ul	Benzen	0.087
		Toluene	0.069
Area %RSD	25ppm, 10ul	Benzen	0.779
		Toluene	0.386
	25ppm, 20ul	Benzen	0.962
		Toluene	0.156

